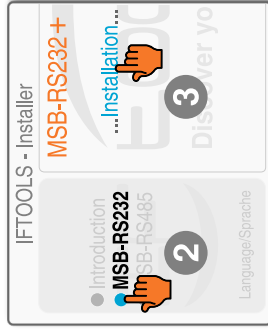


Installation via CDROM

1. Insert IFTOOLS CDROM
If the installation does not start automatically, run setup.exe (Windows), setup_x86_64 (Linux 64 bit) or setup_i386 (Linux 32 bit) from the CDROM.



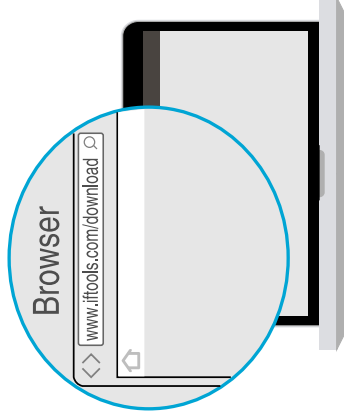
2. Select MSB-RS232 product
3. Click the installation link...



4. Follow the installer instructions

Installation via Internet

1. Goto www.iftools.com/download

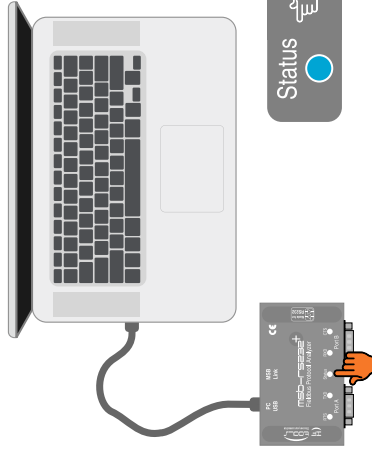


2. Download newest analyzer software
3. Make file executable (only Linux)
4. Run downloaded installer file
5. Follow the installer instructions



First analyzing steps

1. Connect analyzer with PC via USB



2. Start the analyzer software (click icon)



3. Adapt & Configure bus connection
See also back side



4. Start fieldbus recording



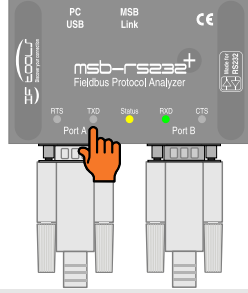
Correct RS232 connection

1. Power on the analyzer
2. Start the analyzer software
3. Connect RS232 cables
4. Check analyzer data LEDs



Both data LEDs **MUST** be green!

Twisted RS232 connection(s)

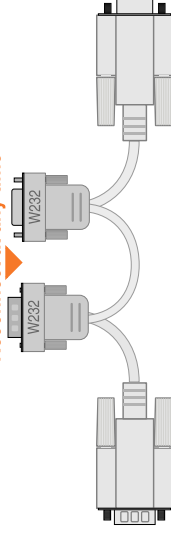


Use Null-Modem

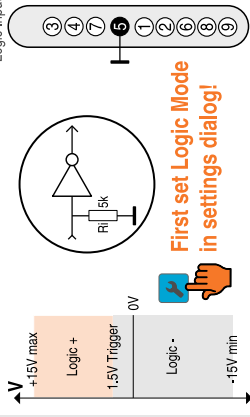
CONNECTORS PINOUT W232 AND LOGIC MODE

Uninterruptable analysis with optional W232

Reconnect at any time

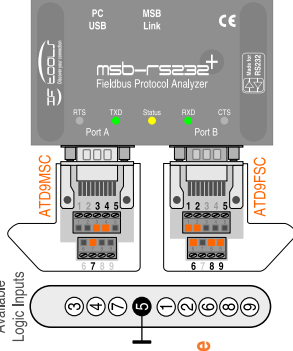


Logic Mode

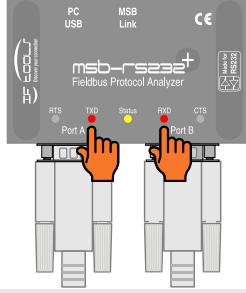


First set Logic Mode in settings dialog!

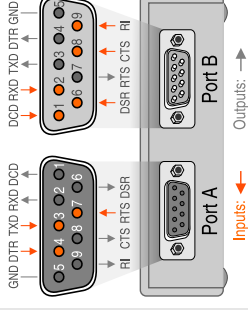
Available Logic Inputs



Inverted RS232 signals



Analyzer Port Pinout



Analyzer Input Signal Order		
Number	Name	Port/Pin
1	DCD	B1
2	RXD	B2
3	TXD	A3
4	DTR	A4
5	DSR	B6
6	RTS	A7
7	CTS	B8
8	RI	B9

HOW TO CONNECT THE ANALYZER